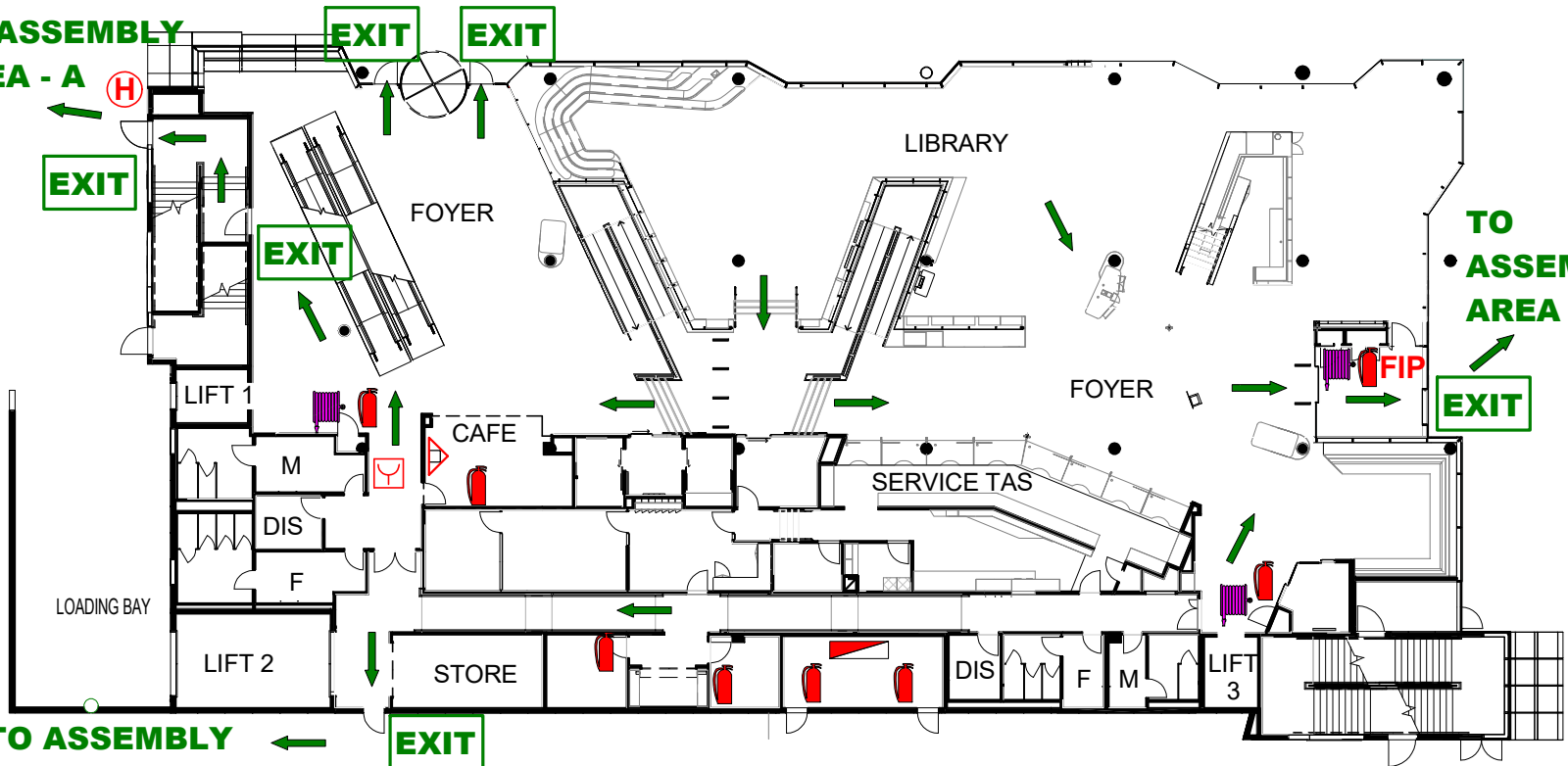


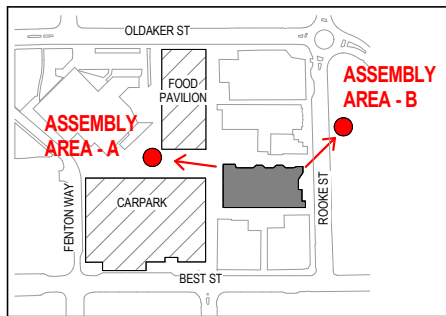
# EMERGENCY/EVACUATION PLAN - GROUND FLOOR

**TO ASSEMBLY  
AREA - A**



**TO ASSEMBLY  
AREA - B**

**TO ASSEMBLY  
AREA - A**



**EVACUATION ASSEMBLY AREA PLAN**

## EMERGENCY ACTION GUIDE

### IN CASE OF EMERGENCY

#### ALARM

Alert others and dial '000'

#### EVACUATE

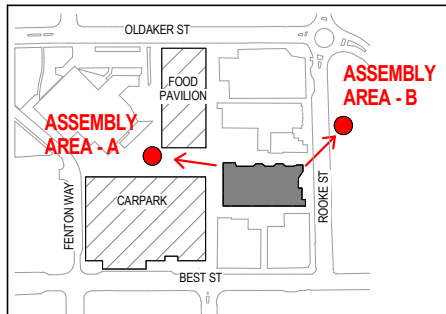
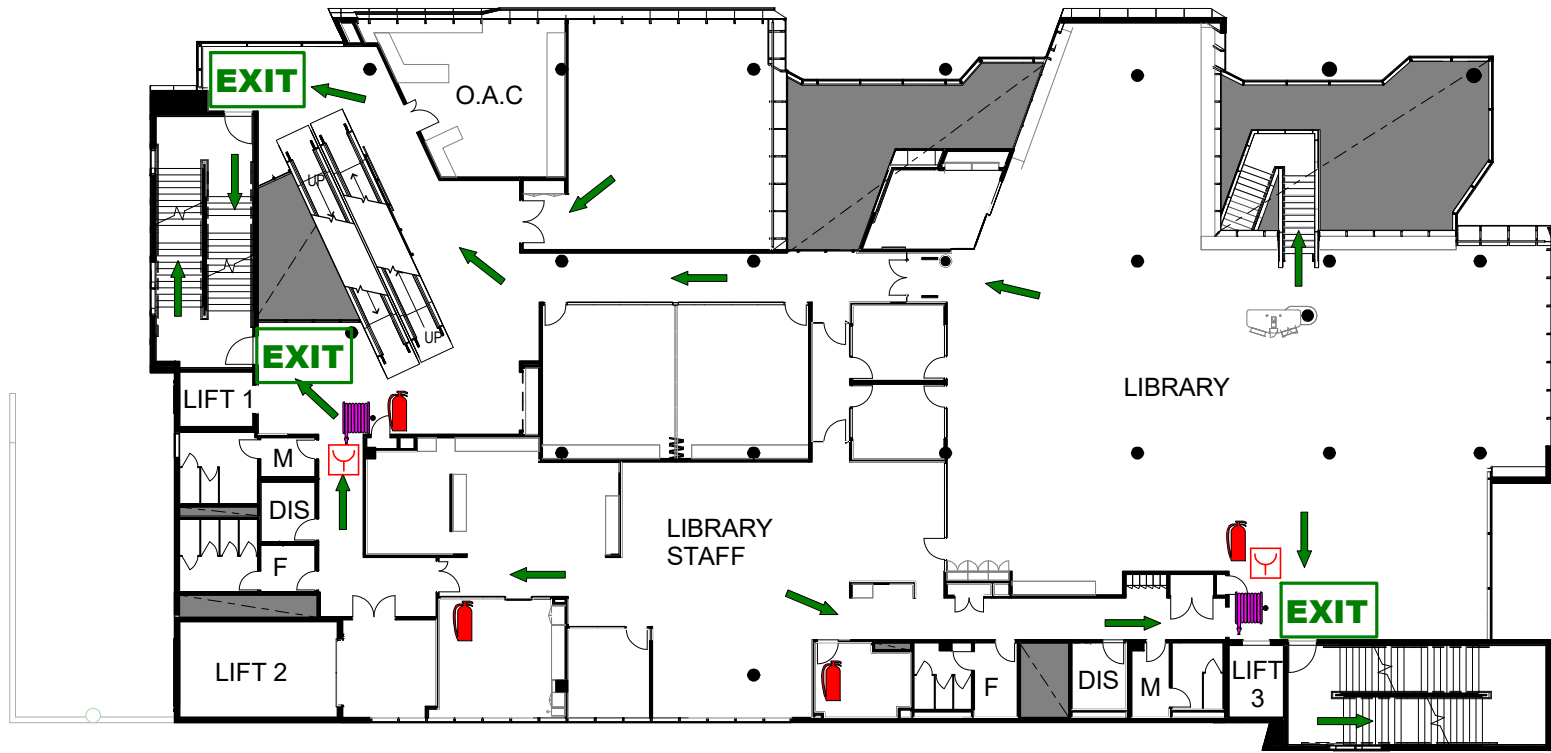
- Use nearest emergency exit
- Take others with you
- Proceed to assembly area as shown
- Do not use the Lift

DO NOT RE-ENTER BUILDING UNTIL TOLD TO DO SO.

### LEGEND:

- ← - WAY OUT
- 🔥 - EXTINGUISHER
- 🚒 - FIRE HOSE REEL
- FIP - FIRE INDICATOR PANEL
- Ⓜ - HYDRANT
- ⚡ - SWITCHBOARD
- 🧯 - FIRE BLANKET
- 📞 - MANUAL CALL POINT

# EMERGENCY/EVACUATION PLAN - LEVEL 1



**EVACUATION ASSEMBLY AREA PLAN**

## EMERGENCY ACTION GUIDE

### IN CASE OF EMERGENCY

#### ALARM

Alert others and dial '000'

#### EVACUATE

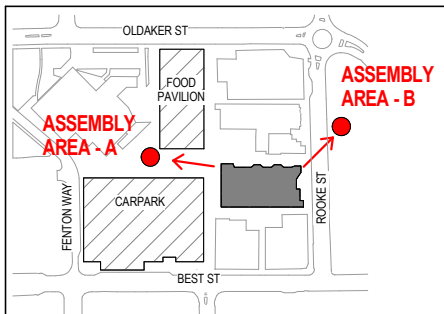
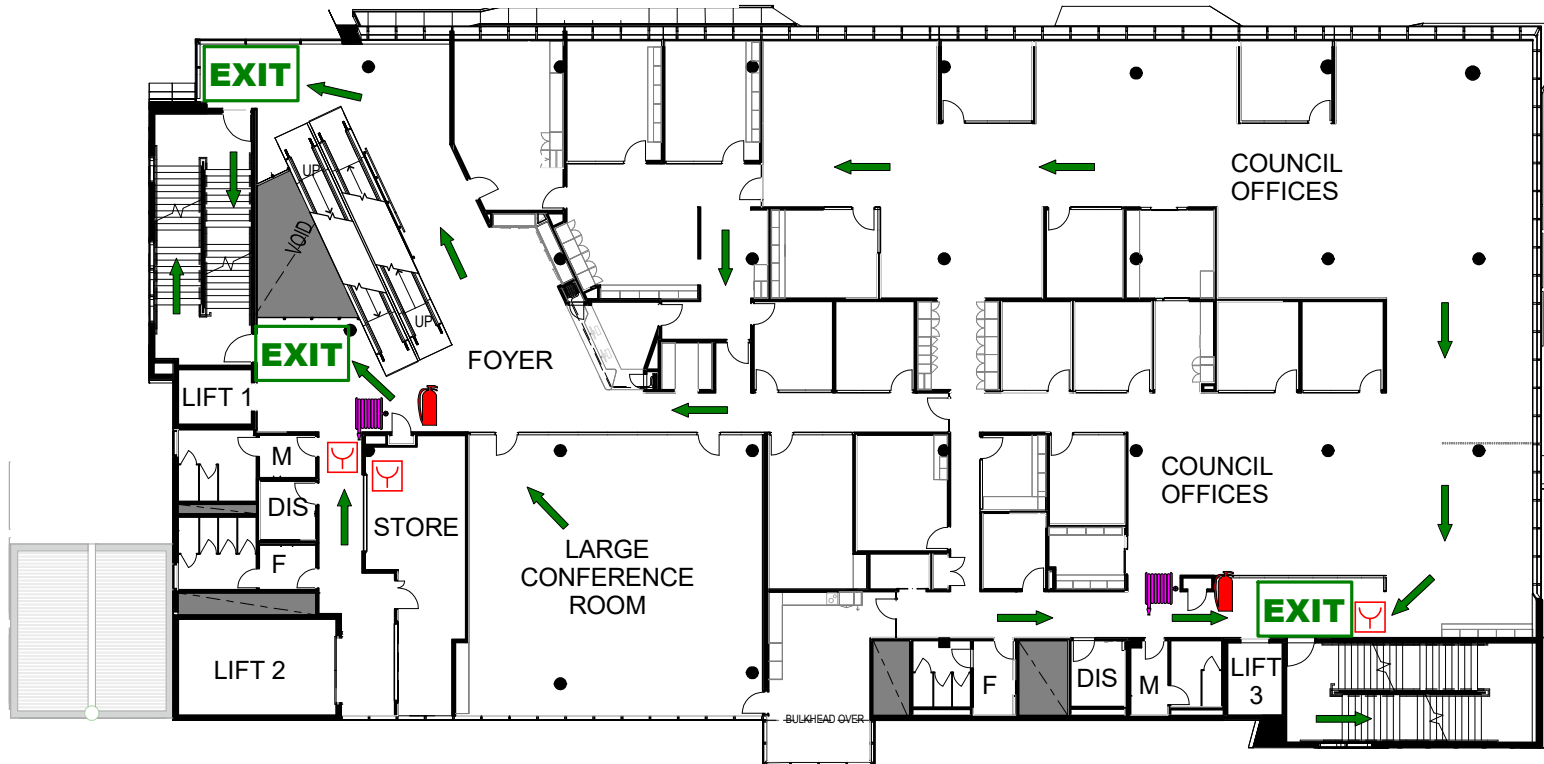
- Use nearest emergency exit
- Take others with you
- Proceed to assembly area as shown
- Do not use the Lift

DO NOT RE-ENTER BUILDING UNTIL TOLD TO DO SO.

### LEGEND:

- ← - WAY OUT
- 🔥 - EXTINGUISHER
- 🚒 - FIRE HOSE REEL
- FIP - FIRE INDICATOR PANEL
- Ⓜ - HYDRANT
- ⚡ - SWITCHBOARD
- 🧯 - FIRE BLANKET
- 📞 - MANUAL CALL POINT

# EMERGENCY/EVACUATION PLAN - LEVEL 2



**EVACUATION ASSEMBLY AREA PLAN**

## EMERGENCY ACTION GUIDE

### IN CASE OF EMERGENCY

#### ALARM

Alert others and dial '000'

#### EVACUATE

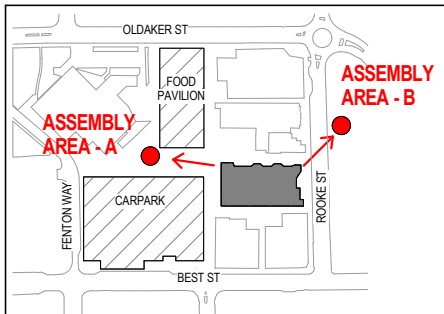
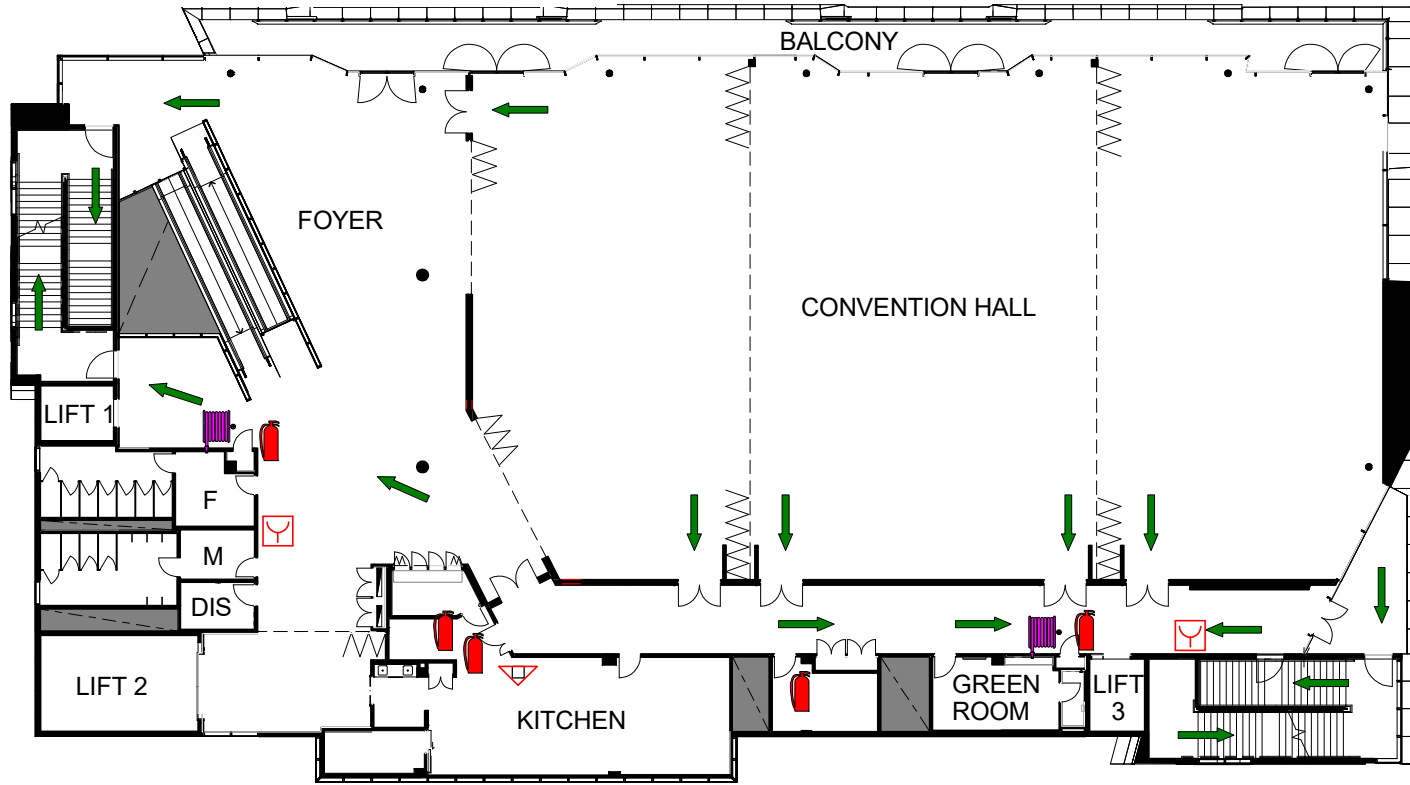
- Use nearest emergency exit
- Take others with you
- Proceed to assembly area as shown
- Do not use the Lift

DO NOT RE-ENTER BUILDING UNTIL TOLD TO DO SO.

### LEGEND:

- WAY OUT
- EXTINGUISHER
- FIRE HOSE REEL
- FIRE INDICATOR PANEL
- HYDRANT
- SWITCHBOARD
- FIRE BLANKET
- MANUAL CALL POINT

# EMERGENCY/EVACUATION PLAN - LEVEL 3



**EVACUATION ASSEMBLY AREA PLAN**

## EMERGENCY ACTION GUIDE

### IN CASE OF EMERGENCY

#### ALARM

Alert others and dial '000'

#### EVACUATE

- Use nearest emergency exit
- Take others with you
- Proceed to assembly area as shown
- Do not use the Lift

DO NOT RE-ENTER BUILDING UNTIL TOLD TO DO SO.

### LEGEND:

- WAY OUT
- EXTINGUISHER
- FIRE HOSE REEL
- FIRE INDICATOR PANEL
- HYDRANT
- SWITCHBOARD
- FIRE BLANKET
- MANUAL CALL POINT